

Tent Pitching Instructions

Family Khamsin

For 2007 Pursuit Range

W I L D



COUNTRY

by Terra Nova

YOUR TENT

Pursuit Range

Each tent contains:

- An inner tent
- A flysheet
- A porch groundsheet
- Pole set and pole bag
- Peg set and peg bag
- Pole repair sleeve and fabric swatches
- Instruction booklet

PITCHING ADVICE

- Practice pitching your Wild Country Tent before using it for the first time.
- Clear the site of stones and twigs and if possible use a Wild Country Groundsheet Protector.
- Pitch the tent with the back into wind and use natural shelter (hedges, walls etc).
- Peg down the corners of the inner or flysheet in windy conditions, before inserting poles.
- Peg out **all** guylines but do not over-tighten wet guys as this can stress the fabric as it dries.
- Avoid cooking inside the tent or bivi bag. Our fabrics are not guaranteed against fire damage, besides it is extremely dangerous. If you must cook in the tent ensure maximum ventilation and keep the stove away from the fabric.
- Condensation occurs in all tents but the excellent ventilation in your new Wild Country tent will keep this to a minimum. Use the flysheet vents, mesh panels and porch hood to ensure good airflow throughout. Single skin bivi bags will suffer more from condensation than conventional tents.
- Keep zips lubricated (using Wild Country Zip Lube) and free of sand and grit. Do not force damaged zips.
- All our tents and bivi bags are fully seam sealed and ready to use.
- If camping on the same site for an extended period, move your tent periodically to prevent condensation forming between the tent floor and the ground.
- All tents are supplied with minimum pegs requirement to pitch.

Don't force anything, if you have to use excessive force when pitching something is wrong. Stop and loosen any points of tension such as straps and zips, as continuing will risk damaging the tent.

POLES (Pursuit & Discovery Ranges)

- Wild Country poles are formed from high quality 7001 T6 aluminium alloy which will give you reliable service provided they are looked after.
- Poles that are properly connected will rarely break. Take time to check that all sections are fully connected.
- Make sure poles are dried and lightly lubricated with Wild Country Zip Lube before storage.
- Do not “throw” or “snap” your poles together as this may damage pole ends and encourage splitting or corrosion.
- Exposure to salt water will cause corrosion and reduce the life of the pole dramatically. Wash poles daily in fresh water and lubricate with Wild Country Zip Lube to minimise damage.
- Fold poles from centre to avoid overstretching shockcord and if possible store poles connected. If cord becomes slack it can easily be replaced by Terra Nova Equipment.
- Poles will adopt a curve after use but this is normal and does not affect the performance of the tent.
- If a pole does break, tape the repair sleeve over damaged area. Continue using your tent until you are able to replace the pole.

ULTRA VIOLET (UV) DEGRADATION

Exposure to UV light causes damage to all lightweight tent fabrics. Preventing early deterioration due to UV exposure depends entirely on how you use your tent. To prolong the life of your tent try to pitch out of direct sunlight or use an oversheet to shade the fly. Replacement flysheets for all Wild Country tents are available if required.

Note: *The Guarantee excludes damage caused by UV degradation*

SPARES & ACCESSORIES

We have various spare parts and accessories available from www.terra-nova.co.uk where you can also find further information about our range, supported expeditions and awards. Sign up to our newsletter if you would like to be kept up to date about our most recent offers, magazine reviews, expedition news and competitions.

REPAIRS & REPLACEMENT PARTS

Because we realise that even with regular maintenance tents get damaged, we offer a comprehensive repair and replacement parts service. Please phone us direct on **+44 (0)1773 837387** or contact your local retailer for details.

If you are returning a tent for repair it would be helpful if you could indicate on the tent the affected area. Please include a daytime contact number and covering note and send to:

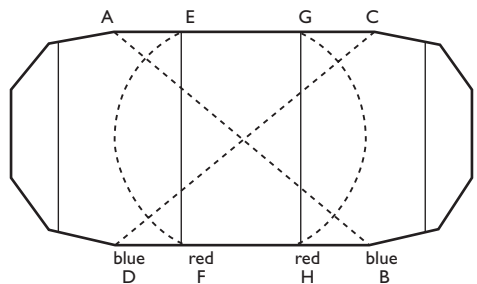
Terra Nova Equipment Limited
Ecclesbourne Park
Alfreton
Derbyshire DE55 4RF

A returns form and address label is available on our website: www.terra-nova.co.uk
We will endeavour to return your repaired tent to you within 15 working days of receiving your go ahead. At busy times of the year (April-August) it may take longer. If you require a repair completing urgently please call our Customer Services department on +44 (0) 1773 837387 **before** sending your tent to us.

Important: *For Health and Safety reasons we can only accept tents in a clean and dry condition.*

PURSUIT RANGE

FAMILY KHAMSHIN



Please read General Advice and Care Instructions before pitching your tent

1. Assemble the 4 poles.
 2. Lay out the inner tent over the supplied porch groundsheet with the centre seam running in between.
 3. Thread the blue poles through the marked blue pole sleeves A-B and C-D.
 4. Locate the ends of the blue poles in the eyelets in the blue webbing tapes. Ensure that the ends of the blue poles locate in the eyelet tapes of the porch groundsheet.
 5. Thread the red poles through the red marked pole sleeves E-F and G-H.
 6. Locate the ends of the red poles in the eyelets in the red webbing tapes.
 7. Peg out the corners of the 2 compartments. The inner should now be standing upright.
 8. Throw the flysheet over the inner and pull the eyelets under the corresponding pole feet.
 9. There are 8 velcro ties on the inside of the flysheet that should be fastened around the poles.
 10. Carefully assemble the 2 alloy poles. Insert each pole in the 2 black pole sleeves above each side door and locate the pole ends in the eyelets provided.
 11. Peg out all elastics and guy lines.
- Each tent comes with 36 pegs.