

Tent Pitching Instructions

Halo 104

For 2007 Family & Group Range

W I L D



COUNTRY

by Terra Nova

YOUR TENT

Family & Group Range

Each tent comes in 2 separate bags for ease of transportation and contains:

- The Inner tents
- The Flysheet
- The Groundsheet
- Pole set
- Peg set and peg bag
- Instruction booklet

PITCHING ADVICE

- Practice pitching your Wild Country Tent before using it for the first time.
- Clear the site of stones and twigs and if possible use a Wild Country Groundsheet Protector.
- Pitch the tent with the back into wind and use natural shelter (hedges, walls etc).
- Peg down the corners of the inner or flysheet in windy conditions, before inserting poles.
- Peg out **all** guylines but do not over-tighten wet guys as this can stress the fabric as it dries.
- Avoid cooking inside the tent or bivi bag. Our fabrics are not guaranteed against fire damage, besides it is extremely dangerous. If you must cook in the tent ensure maximum ventilation and keep the stove away from the fabric.
- Condensation occurs in all tents but the excellent ventilation in your new Wild Country tent will keep this to a minimum. Use the flysheet vents, mesh panels and porch hood to ensure good airflow throughout. Single skin bivi bags will suffer more from condensation than conventional tents.
- Keep zips lubricated (using Wild Country Zip Lube) and free of sand and grit. Do not force damaged zips.
- All our tents and bivi bags are fully seam sealed and ready to use.
- If camping on the same site for an extended period, move your tent periodically to prevent condensation forming between the tent floor and the ground.
- All tents are supplied with minimum pegs requirement to pitch.

Don't force anything, if you have to use excessive force when pitching something is wrong. Stop and loosen any points of tension such as straps and zips, as continuing will risk damaging the tent.

POLES (Family & Group Range)

- Wild Country poles in the Family and Group Range use high quality zinc coated steel and glass fibre in the Halo range. Take time to check that all sections are fully connected.
- Make sure poles are dried and lightly lubricated with Wild Country Zip Lube before storage.
- Packing a tent or bivi bag away wet may cause mildew and pole corrosion. Try to ensure all parts, including groundsheet and poles are dry and clean before storage.
- Use Wild Country tent cleaner to remove mud and stains.
- Do not use detergent or a washing machine as this will damage fabrics and proofing.
- Do not allow your tent or bivi bag to come into contact with oil, solvents, acids or other chemicals.
- Try to avoid pitching under trees as sap is extremely difficult to remove and may cause damage to flysheet.

ULTRA VIOLET (UV) DEGRADATION

Exposure to UV light causes damage to all lightweight tent fabrics. Preventing early deterioration due to UV exposure depends entirely on how you use your tent. To prolong the life of your tent try to pitch out of direct sunlight or use an oversheet to shade the fly. Replacement flysheets for all Wild Country tents are available if required.

Note: *The Guarantee excludes damage caused by UV degradation*

SPARES & ACCESSORIES

We have various spare parts and accessories available from www.terra-nova.co.uk where you can also find further information about our range, supported expeditions and awards. Sign up to our newsletter if you would like to be kept up to date about our most recent offers, magazine reviews, expedition news and competitions.

REPAIRS & REPLACEMENT PARTS

Because we realise that even with regular maintenance tents get damaged, we offer a comprehensive repair and replacement parts service. Please phone us direct on **+44 (0) 1773 837387** or contact your local retailer for details.

If you are returning a tent for repair it would be helpful if you could indicate on the tent the affected area. Please include a daytime contact number and covering note and send to:

Terra Nova Equipment Limited
Ecclesbourne Park
Alfreton
Derbyshire DE55 4RF

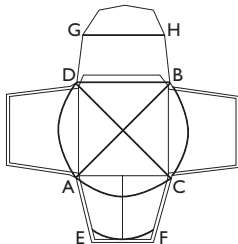
A returns form and address label is available on our website: www.terra-nova.co.uk We will endeavour to return your repaired tent to you within 15 working days of receiving your go ahead. At busy times of the year (April-August) it may take longer. If you require a repair completing urgently please call our Customer Services department on +44 (0) 1773 837387 **before** sending your tent to us.

Important: *For Health and Safety reasons we can only accept tents in a clean and dry condition.*

FAMILY & GROUP RANGE

We recommend that two (or more) people pitch these tents.

HALO 104



1. Unpack tent and lay out the flysheet and inner tent, ensuring the inner tent doors are closed.
2. Carefully assemble the curved steel poles (x 2) and slide into the black fabric pole sleeves on the inner tent marked as A-B, C-D (the two steel poles are the same).
3. Lift the curved poles and fit one straight steel pole to each end. Locate pole ends in eyelets provided.
4. The inner tent will now be standing.
5. Carefully assemble the 2 yellow poles - slide the 2 long poles through the sleeves marked as A-D and B-C.
6. Carefully assemble the green pole and slide through corresponding pole sleeve E-F on the inner tent.
7. Carefully assemble the 2 black poles and slide through the corresponding pole sleeves on the inner tent marked as A-C and B-D. Locate the pole ends in the eyelets provided.
8. Peg out the inner tent.
9. Carefully assemble the red pole and slide through the corresponding pole sleeve on the flysheet marked as G-H. Locate the pole ends in the eyelets provided.
10. Pull the flysheet over the inner tent, matching the red corner tape with that on the inner tent.
11. Connect flysheet to inner tent at each corner; using buckles provided. This will hold the flysheet in place while you peg it out.

Each tent has:

Pegs 65. Poles: 2 steel (comprising 2 curved and 4 straight uprights), 2 black glass fibre, 2 yellow glass fibre, 1 red glass fibre, 1 green glass fibre.