

TENT PITCHING INSTRUCTIONS
CARE AND MAINTENANCE
LASER COMPETITION/LASER

T E R R A



N O V A

GENERAL ADVICE

CHOOSING A SITE

Choose a level, sheltered site that is well drained. Although avoid pitching under trees as sap may fall onto the flysheet and it is almost impossible to remove. A grassy site is best but remove any sharp stones and twigs which may damage your groundsheet.

PITCHING IN HIGH WINDS

Always ensure that everything is fastened down, including the flysheet awaiting assembly.

- If the wind is from a constant direction try to orientate the tent tail into the wind. On two door designs only leave the doors open to allow the wind to flow through.
- If pitching tunnel tents such as the Laser series in high winds, pitch with the pole in the direction of the wind to provide greater stability.
- Once you have pegged down the groundsheet, thread the poles from the upwind direction and pitch as normal.
- Put the flysheet on from the upwind direction and connect it under the pole ends immediately before moving to the downwind side of the tent to finish fitting the flysheet.
- Finally, peg out all the guylines.
- Once pitched leave the doors closed as much as possible since they increase the strength and stability of the tent. Never leave the doors open if you are away from the tent on particularly windy days.

PITCHING IN THE RAIN

If you have to pitch an inner pitch model in the rain, we would advise covering the pegged down inner with the flysheet whilst you thread the poles. If conditions prevent this, the speed with which you can pitch a Terra Nova tent (with practice) will minimise the exposure of the inner to the rain.

PEGS

All tents are supplied with minimum pegs requirement to pitch.

GROUND SHEET PROTECTORS

Groundsheet protectors or footprints provide extra protection from sharp objects and rough ground, and help prolong the life of the tent's groundsheet. Groundsheet protectors are cut precisely to fit under each model.

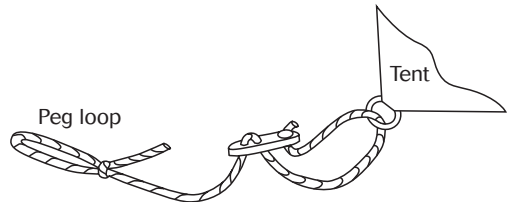
GUYLINES

Always use all the guylines on the flysheet. Guylines contribute to the overall strength of the tent, increasing its stability and performance in bad weather. Failure to use guylines correctly may result in damage to the tent.

ATTACHING REPLACEMENT GUYLINES AND SLIDERS

It is important to attach guylines and sliders as illustrated.

1. Pass the guylines through the top hole on the slider
2. Loop it through the ring on the flysheet pull out tab
3. Pass the guylines through the remaining two holes in the slider
4. Tie a small loop at the very end of the guylines. The peg should be placed through this small loop. Tension can be adjusted using the slider.



COOKING

Our advice is do not cook in your tent, as the inner tent and flysheet fabrics are not flame resistant. Our tents are not guaranteed against fire damage or damage from cooking fats etc. If you must cook inside the porch, make sure you maintain the maximum distance possible between stove and flysheet or inner and ensure maximum ventilation.

GENERAL ADVICE

CONDENSATION

Condensation occurs in all tents. The amount of condensation will vary depending on the prevailing conditions, from droplets extending over the whole upper canopy, to water only apparent on touching the inside of the tent.

Single skin Gore-Tex® tents and bivi bags will suffer more from condensation than conventional tents. Tents fitted with snow valances are also likely to suffer more due to reduced air flow.

A person can produce more than one litre of perspiration in a single night. Maximising ventilation is key to reducing condensation as much as possible.

MINIMISING CONDENSATION

On still, dry nights, leave the flysheet doors open as much as possible. In more adverse conditions, create a small tunnel vent at the top of the door by unzipping the flysheet doors approximately 15cm. The pole sleeves are designed to aid air flow between the tent inner and flysheet.

On windy, dry nights, it should be possible to have no condensation at all if the tent is well ventilated, as the action of the wind on the flysheet pumps out the damp air.

In freezing conditions condensation can form as hoarfrost inside the tent. Again, prevention by maximum ventilation is the answer.

DEALING WITH CONDENSATION

Generally, the best method of dealing with heavy condensation, assuming dry conditions in the morning, is to remove the flysheet, shake off condensation and replace it.

If the condensation is slight and conditions are windy, simply venting the tent will soon dry out the flysheet.

If camping on the same site for an extended period, move your tent periodically to prevent condensation forming between the tent floor and the ground.

CARE INSTRUCTIONS

FLYSHEET

During prolonged heavy rain the nylon fibres in the flysheet fabric will absorb some of the water and expand. This will give the flysheet a wet appearance in places – wetting out – and may cause it to sag slightly. If this occurs it is important to re-tension the flysheet by adjusting the pole feet from the outer most to inner most eyelet on the webbing tapes. After the rain has stopped and the flysheet starts to dry out, the nylon fibres will contract. It is important to loosen the flysheet tension by re adjusting the pole feet to the outer most eyelets on the webbing tapes. If the tension is not released, in some cases, the force of the contracting flysheet can damage the poles. Cleaning and reproofing the outer surface of the flysheet periodically, can help stop water from building up in the fibres and causing the effects of wetting out.

During normal conditions, insert the poles in the outer most eyelets on the webbing tape. This will make it easier to line up the flysheet seams with their corresponding poles. Peg out the base of the tent evenly and not too hard as this can distort the tension. Always peg out the guylines.

GROUNDSHEET

Our groundsheets are lightweight, strong, fully taped and completely waterproof. However, they are not indestructible and levelling the site and removing stones is time well spent.

Grassy sites are best, but even here stones and twigs can cause damage. If you can, take along a Groundsheet Protector to put under the tent. This will provide increased protection and will also help to insulate the floor, cutting down on condensation.

It is not advisable to wear boots inside the tent and try to ensure that nothing sharp or abrasive is pushed against the groundsheet inside the tent. During prolonged use, condensation is trapped between the groundsheet and your camping mat so take time to air the tent out whenever possible.

CARE INSTRUCTIONS

POLES

All our tent poles are made from 7001-T6 aluminium alloy. Although very strong under tension within the pole sleeves, they can be damaged if treated roughly during pitching or storage.

PITCHING – Always ensure that all pole sections are fully connected. Poles that take up tight curves when tensioned are pre-bent at the factory, but poles that start out straight will take a curve during use. This is normal and should cause you no concern.

DO NOT “snap” or “throw” the poles into place because:

- this may damage the anodising leading to corrosion and the pole to split
- pole sections may not be fully connected causing them to split when in use

DO NOT force the poles. Poles are put under some of the greatest tension during pitching and many of us do not realise our own strength!

- If the pole sleeve is gathered, gently ease out the gathers over the pole as you thread it
- To release tension open the doors

COLLAPSING – When collapsing your poles for packing, always start by folding the pole from the middle as this will avoid over stretching the shockcord. Do not allow the sections to flick back against each other under the elastic tension, as this can cause damage to the tube ends.

STORAGE – Always ensure that the poles are stored dry. Dampness causes corrosion and if this occurs, the connector may stick preventing the pole from being properly inserted. The pole may then crack or split when put under tension. Storing the poles unfolded will help prolong the life of the shock-cord.

CARE – If corrosion has occurred, clean off with a very fine abrasive and re-lubricate with our Zip Lube. Do not use oil or grease as this will attract dirt. Periodic lubrication should be undertaken, even if corrosion has not taken place.

All aluminium alloys will corrode if exposed to a salt water environment, even sea spray. Wash them thoroughly in clean water, dry them and lubricate. This may be necessary even if camping some distance from the shore.

BREAKAGES – If a pole breaks under exceptional conditions or misuse, use the pole repair sleeve, which is provided with each lightweight and endurance tent (not included with Superlite models), to effect a temporary repair. Cover the break in the pole with the sleeve and tape it in place. Replacement poles are available from Terra Nova. If you are going overseas for an extended expedition it is worth taking spare poles in case of breakage. You may also want to consider taking an extra set of poles to double pole your tent if you are travelling to an exposed area (double poling is not suitable for Laser Range and Superlite Voyager).

Do not force anything. If you have to use excessive force when pitching something is wrong. Stop and loosen any points of tension such as straps and zips, as continuing may risk damaging the tent.

ZIPS

We use the very best loop coil zips throughout all our tents. In normal use they will give trouble free performance. However, periodic lubrication with Zip Lube will ensure that this high performance continues.

Dusty conditions or contamination with mud will cause the zips to lose performance and stick. If the zips become fouled **DO NOT FORCE THEM**, you will damage the teeth. Clean with soapy water, rinse and re-lubricate with Zip Lube.

If the zips on your tent fail, it is probably because the slider is worn. We can replace sliders or complete zips.

EXTENDED TRIPS

If you are fortunate enough to go on an extended trip where the tent will have prolonged use **BE PREPARED.**

We strongly recommend:

- Using a groundsheet protector
- Taking spare pole(s) in case of breakage or considering double poling the tent if travelling to an exposed area
- Periodically using zip and pole lube to lubricate zips
- Taking an emergency repair kit

Remember weather can be unpredictable and no tent is completely infallible!

CARE INSTRUCTIONS

CLEANING

We recommend that you regularly use our tent cleaner or pure soap to clean your tent or bivi bag.

Wash your tent in the bath or a tub of warm water. Always rinse the tent and dry thoroughly in the shade.

After cleaning, reproofing the outer will strengthen the fabric and improve its water repellency.

- DO NOT use detergents to clean your tent as they may harm the proofing
- NEVER machine wash or tumble dry your tents
- AVOID contact with fuel, oil and chemicals, as the stains from these may be impossible to remove and will probably attack the fabric and damage the proofing
- AVOID pitching under trees as sap may fall onto the flysheet and it is almost impossible to remove.

CLEANING SERVICE

If you are not happy cleaning your own tent or simply do not have the time, we now offer a tent cleaning service. Call 01773 837387 or look on www.terra-nova.co.uk for details.

REPAIRS

Even with the best care possible, accidents and general wear and tear will occur. However, we can usually repair your tent, even if the damage is extensive.

We recommend that you carry the pole repair sleeve and fabric swatches supplied with your tent, at all times (not supplied with the Superlite Range II).

FIELD REPAIRS – Use duck tape / gaffer tape or a needle and thread, to repair tears when out in the field. Use a synthetic adhesive such as cycle puncture repair glue with the fabric swatches provided (glue is not provided with the tent). Poles can be temporarily repaired using the pole repair sleeve – cover the pole with the sleeve and then tape it in place.

A more comprehensive Emergency Repair Kit is available (see Accessories, page 13).

FLYSHEET

Exposure to strong sunlight causes damage to all lightweight nylon fabrics resulting in the fabric losing strength and eventually disintegrating. The lighter the fabric the more susceptible it is to UV damage. High altitude exposure causes much more rapid degradation. Preventing early deterioration from UV exposure depends entirely on how the tent is used. To prolong the life try to pitch out of direct sunlight as much as possible or use an oversheet to shade the fly. Alternatively, in very hot and sunny climates the flysheet may be totally removed during daylight hours. If camping near salt water, wash in clean water or better still in tent cleaner.

STORAGE

After using your tent, it is worthwhile spending time checking it over on your return. Look for signs of wear and tear which may require attention. Early detection may prevent problems developing later. Most importantly, check that the tent and poles are dry, re-lubricating zips and poles as necessary. Remember, eyelet tapes take longer to dry than the tent fabric, and dampness (which can cause mildew) may be trapped in the folds of the tent when stored.

If the tent or bivi bag is stored wet for long periods, water can react with certain chemicals in the seam tape, causing the tape to lift and the coating to breakdown and eventually decompose.

If mildew occurs (identified by black marks and a mouldy smell), sponge the affected areas with a mild solution of disinfectant, then sponge with soapy water, rinse and dry thoroughly. (DO NOT USE DETERGENTS) If not caught early enough, permanent damage to fabric and proofing will occur.

Do not store your tent or bivi bag near sources of heat, remember lofts can become very warm during summer months. Periodically air your tent to prevent the fabric from adhering to each other and affecting the performance of the tent.

Remember; store your tent in a cool dry place and never dry it in direct heat.

FOOD STORAGE

Do not store food in your tent. It may attract animals which can bite or tear their way in to reach their dinner!

TENT ACCESSORIES

A comprehensive range of items designed to add greater versatility and performance to the tents, available from your local stockist or Terra Nova.

GROUNDSHEET PROTECTORS

Tailor-made for each tent in the range, these provide extra protection from sharp objects and rough ground, and help to increase the life of the tent's groundsheet.

THE LOFT

More suitable for the larger tents in our range, The Loft is an ideal way of increasing storage space. Designed to clip to the binding near the apex of the inner tent, it is quick and easy to fit and offers 2 mesh storage pockets and a torch loop.

EMERGENCY REPAIR KIT

The ERK contains fabrics, adhesive, guylines, sliders and pole repair sleeve in a neat pack.

TENT CLEANER (250ml)

For use on all our flysheets and inners, Tent Cleaner will clean the fabric without impairing breathability or waterproofness.

ZIP LUBE (150ml)

Zip Lube is a silicone-based spray for lubricating and protecting tents zips and aluminium alloy poles.

S.O.S. STAKES (pack of 10)

Ten 25cm super lightweight aluminium alloy stakes designed for use on snow or sand, where the increased depth and width provides a more stable anchor point than a standard peg.

SNOW VALANCES

When long periods of exposure to extreme winter conditions are expected, consider adding snow valances to your tent. We can fit these at our factory to endurance range models and the Ultra Quasar. Please call our customer services department on 01773 837387 for further details.

SPARE PEGS (pack of 6)

We provide packs of:- 7000 series lightweight Alloy pegs, Superlight Carbon fibre pegs, Titanium pegs.

We have various spare parts and accessories available from www.terra-nova.co.uk where you can also find further information about our range, supported expeditions and awards. Sign up to our newsletter if you would like to be kept up to date about our most recent offers, magazine reviews, expedition news and competitions.

CUSTOMER SERVICES

PRODUCT REPAIRS

We offer a full repairs service to cope with the damage that wear and tear and regular use can cause. If you need repair work to be carried out, return your tent to us in a clean and dry condition*. Please enclose a clear description of the damage. It would be helpful if you could indicate on the tent the location of any damage. Our Customer Services staff will examine the damage and send you a quote for the necessary repairs. We will endeavour to return your repaired tent to you within 15 working days of receiving your go ahead (at busy times of the year April-August it may take longer). A returns form and address label is available on our website www.terra-nova.co.uk

**Health and Safety regulations mean we can only accept products in a clean and dry condition.*

CLEANING

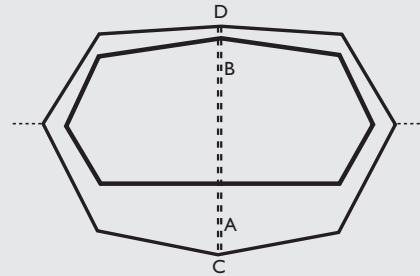
If you are unsure about cleaning your tent yourself or simply don't have time, we can do it for you for a small charge. Please contact our Customer Services Department or see our website for details.

REPLACEMENT PARTS

Terra Nova maintain a comprehensive stock of spare parts for our tents, including some discontinued models. Please contact our Customer Services department for details.

Customer Services
+44 (0) 1773 837387
Or go online
www.terra-nova.co.uk

Laser Competition/Laser



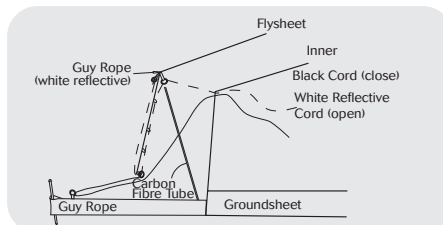
Pitching Instructions

- 1 Unpack tent and lay out flysheet and inner.
(Note: The inner tent is already attached to the inside of the flysheet)
- 2 Carefully assemble the alloy pole. Ensure all the joints are fully connected.
- 3 Slide pole through flysheet pole sleeve, shown as the double dotted line on the diagram above.
(Note: for Laser this is located under the black pole sleeve cover)
- 4 Insert each pole end into the corresponding eyelet tab on the hem of the flysheet, tabs are located at points C and D on diagram above
- 5 Peg out: in the following order:
 - i) guy rope attached to each end of the inner
 - ii) guy rope at each end of the flysheet
(note: the carbon fibre poles should slope out slightly at the top)
 - iii) remaining inner and flysheet tapes and elastics

Note: Pole sleeve cover provided with Laser Competition. Attach by tying to the webbing loop at the pole base and underneath the cover.

Laser flysheet ventilation system

To operate: Pull on white reflective cord to open.
Pull on black cord to close.



Supplied with: 1 Alloy pole,
2 black Carbon Fibre poles

Laser Competition: 12 Carbon Fibre pegs

Laser: 12 Titanium pegs.