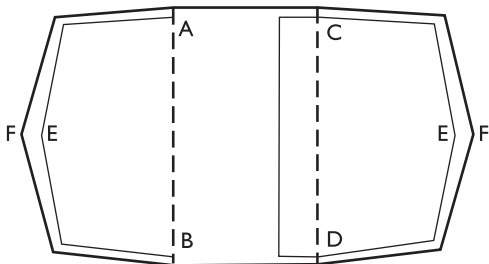


LASER SPACE 5



1. Unpack tent and lay out flysheet and inner.

Note: The 2 inner tents are already attached to the inside of the flysheet

2. Carefully assemble the 4 alloy poles. Ensure all the joints are fully connected.
3. Slide the 2 long alloy poles through the flysheet pole sleeves shown as the dotted lines in the diagram above.
Note: These are located under the black pole sleeve covers.
4. Insert each pole-end into the corresponding eyelet tab on the hem of the flysheet. The tabs are located at A, B and C, D on the diagram above.
5. Insert the short alloy poles, between the red pockets E (on the inner) and F (on the flysheet) at each end of the tent.

Note: For easy identification, these pockets are already joined together with red elastic cord.

6. With the centre poles vertical, peg out the guy ropes at the apex of each short red pole. The tent will now stand.
7. Peg out the remaining guy lines, inner and flysheet hem elastics.

Laser Space 5 is supplied with:

- 4 alloy poles
- 32 titanium pegs

To validate your warranty register online at www.terra-nova.co.uk

Pour valider votre garantie, enregistrez-vous en ligne sur www.terra-nova.co.uk

Zur Bestätigung Ihrer Garantie registrieren Sie sie bitte online unter www.terra-nova.co.uk

For tent pitching and care instructions visit www.terra-nova.co.uk

Pour consulter les instructions de montage et d'entretien des tentes, visitez www.terra-nova.co.uk

Anweisungen zur Zeltaufstellung und Pflege finden Sie unter www.terra-nova.co.uk