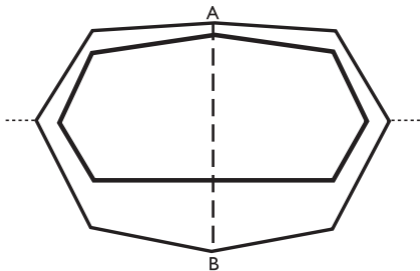


# LASER ULTRA I



1. Lay out the flysheet and inner.  
(Note: The inner tent is already attached to the inside of the flysheet)
2. Carefully assemble the alloy pole. Ensure all the joints are fully connected.
3. Slide pole through flysheet pole sleeve, shown as the dotted line on the diagram above.
4. Insert each pole-end into the corresponding eyelet tab on the hem of the flysheet, tabs are located at points A and B on diagram above.
5. Peg out: in the following order:
  - i) guy rope attached to each end of the inner
  - ii) guy rope at each end of the flysheet  
(Note: the carbon fibre poles should slope out slightly at the top)
  - iii) remaining inner and flysheet tapes and elastics

The Laser Ultra I is supplied with:

1 x alloy pole, 2x carbon fibre rods

12 x 1g titanium pegs

**To validate your warranty register online at [www.terra-nova.co.uk](http://www.terra-nova.co.uk)**

Pour valider votre garantie, enregistrez-vous en ligne sur [www.terra-nova.co.uk](http://www.terra-nova.co.uk)

Zur Bestätigung Ihrer Garantie registrieren Sie sie bitte online unter [www.terra-nova.co.uk](http://www.terra-nova.co.uk)

**For tent pitching and care instructions visit [www.terra-nova.co.uk](http://www.terra-nova.co.uk)**

Pour consulter les instructions de montage et d'entretien des tentes, visitez [www.terra-nova.co.uk](http://www.terra-nova.co.uk)

Anweisungen zur Zeltaufstellung und Pflege finden Sie unter [www.terra-nova.co.uk](http://www.terra-nova.co.uk)